

BRIEFING

• STAGE 7 • 14/01
RIYADH > AL DUWADIMI

***DREAM.
DARE.
LIVE IT.***





RIYADH > AL DUWADIMI

ROAD SECTION A

255

SELECTIVE SECTOR

483

ROAD SECTION B

136

BIVOUAC 1ST DEPARTURE

FIM

04:10

FIA

06:45

DSS 1ST DEPARTURE

FIM

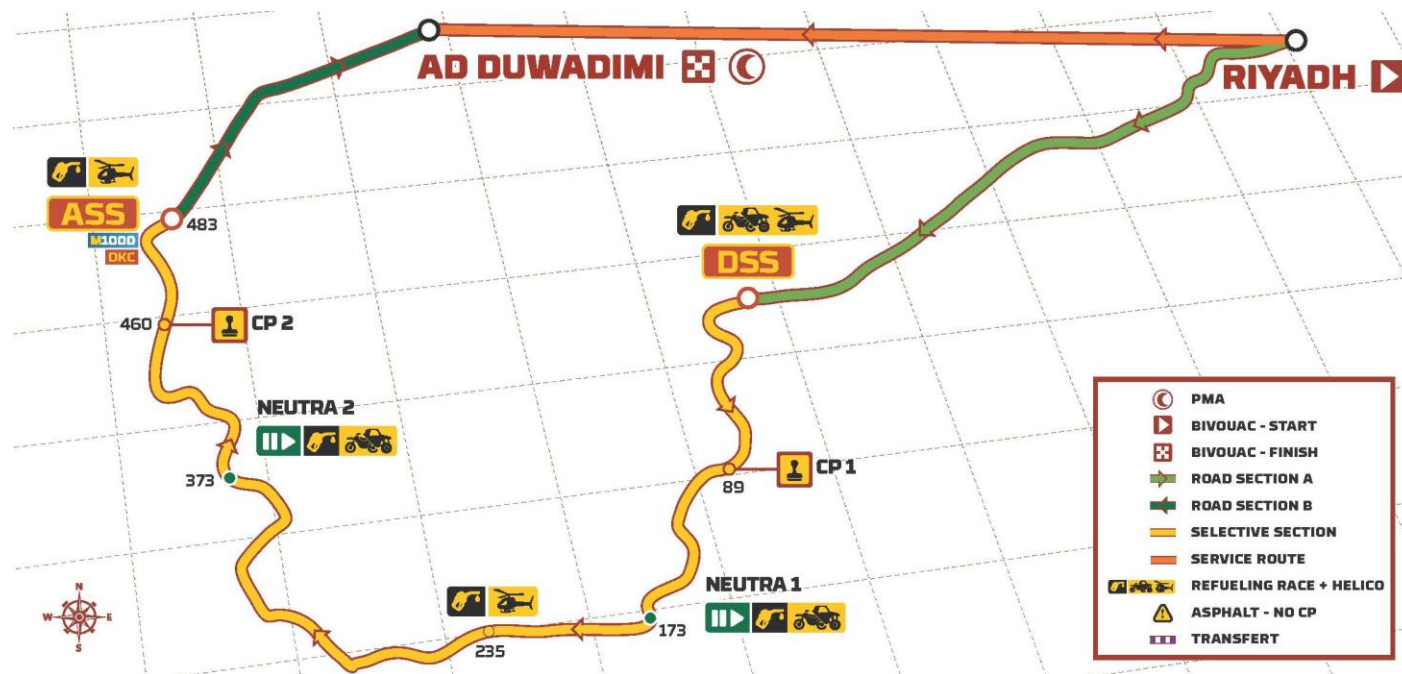
07:40

FIA

10:00

2

Neutralisations



/// GENERAL DESCRIPTION

- ***DSS - K15: Off-piste in vegetation, tight in small canyons - navigation is difficult, risk of dust***
- ***K13 - K20 : Winding track with vegetation***
- ***K20 - K51: Faster track, sometimes bumpy in canyons***
- ***K51 - K89 : Tighter track, but quickly changes to a very fast plateau, sometimes off-piste in wadis***
- ***K89 - PK125 : Still a fast track but lots of wadi crossings, careful : many changes of direction in canyons***



/// GENERAL DESCRIPTION

- ***K125 - K130 : Off-piste between rocks, navigation difficult***
- ***K130 - K181 : Fast track in canyons***
- ***K181 - K243 : Sandy off-piste and dunes, then off-piste and fast sandy track***
- ***K243 - K333 : Alternating track and fast off-piste***
- ***K333 - K370 : Dunes***
- ***K370 - K463 Fast sandy track, sometimes with stones, sometimes bumpy***
- ***PK 462 - ASS : Less rolling track, stones***



/// DETAILED DESCRIPTION

- *PK0 The special starts in off-piste, with small rivers and big canyons, navigation is difficult*
- *PK6 The canyons are more open and in some areas the tracks are clearly visible.*
- *PK9 Major and secondary tracks, small valleys and dry rivers*
- *PK28 Small canyons that close in, tracks difficult to see, navigation is difficult*
- *PK41 Alternating tracks and off-piste in dry rivers and wide valleys*
- *PK54 The special continues on fast gravel tracks in wide valleys*
- *PK65 Fast tracks and off-piste on large sandy plateaus*
- *PK73 Fast, sandy valleys between large black stone mountains, easier to navigate*
- *PK89, CP1 and fast valleys between stone mountains, the terrain is sandier*
- *PK103 Small valleys and closed canyons, and navigation becomes more difficult*
- *PK110, The valleys open up and the tracks are faster, gravel*
- *PK120 Sandy plateau between wildes piles of black stone, some dunes appear - very beautiful landscape*

/// DETAILED DESCRIPTION

- *PK130 Tracks and off-piste in large, dry rivers, stony valleys, rapid*
- *PK154 Fast main tracks on large gravel plateaus*
- *PK162 Gravel and stony track in wide dry rivers, very rough ground, washouts and holes*
- *PK172 Back on fast main gravel track, then 1km of neutral for motorbike/ssv refuelling.*
- *PK179 Wide sandy valleys between black stone mountains, then entry into an area of level 2 and 3 dunes*
- *PK185 Super-fast tracks on a wide sandy plateau*
- *PK190 Succession of level 1 and 2 dunes, the same dunes as stage 3 but in the opposite direction*
- *PK232, end of the dune zone, wide, fast, sandy plateau, the tracks are not very visible, important to follow the cap*
- *PK244, Tracks and off-piste in wide sandy valleys, some areas are sandy*
- *PK253, Change of terrain, area of wide valleys with stones, the tracks are very bumpy (holes)*
- *PK260 Sandy tracks on wide, fast plateaus, stay focus on the navigation, follow the cap*

/// DETAILED DESCRIPTION

- *PK284, Gravel tracks and off-piste in wide valleys formed by black stone mountains*
- *PK314 The valley opens up, the terrain changes, the tracks are faster but with more stones, rough ground*
- *PK326 Winding tracks between rocky mountains, the terrain is sandier*
- *PK336 Succession of level 1 and 2 dunes (mostly level 1)*
- *PK370 End of the dunes (last of the stage), then neutral refuel and then fast, winding gravel tracks in good condition, WRC style.*
- *PK411, Main winding tracks, faster, change of nature of terrain, gravel and sand.*
- *PK460 CP2, winding gravel tracks*
- *PK468 Winding secondary tracks, tight and in rough ground, entering and leaving a river in a mountain valley, lots of stones in this sector, be careful with tyres*
- *PK483, ASS*



STAGE INFO

DSS Fuel #1

Neutralisation #1 KM173

Fuel #2

RB roll change for bikes

Timing

FIM/SSV/CHG/TRK → 25'

ULT/STK → 5'

Neutralisation #2 KM373

Fuel #3

Timing

FIM/SSV/CHG/TRK → 20'

ULT/STK → 5'



STAGE INFO

Common route #1
Service crew / Race



Road Section A : *Competitor RB → PK0 - PK5,05 / Service crew RB → PK0 - PK5,18*

Common route #2
Service crew / Race



Road Section B : *Competitors RB → PK128,24 - PK135,71 / Service crew RB → PK310,89 - PK319,27*

/// VIGILANCE POINTS

- ***First 50 km very difficult in the canyons, difficult navigation and risk of dust***
- ***Two sectors of dunes → soft in some areas***
- ***It's going to be a long day, so make sure you stay focused***
- ***Lots of camps at the end of the special → deviations in the Roadbook***



COMPLICATED ROADBOOK NOTES



38,90 - 40,59 - 71,03 - 85,29 - 144,51 - 309,64 - 335,92 - 423,01 - 477,87



COMPLICATED ROADBOOK NOTES

38,90

MODIF 38.90 <hr/> 0.49 (M)	RP PP 200 A BAD 	ET à 250m 180 A (17)
--	--	---

40,59

40.59 <hr/> 0.30	230 A BAD 50m RP P 150m 	
-----------------------------------	--	--

71,03

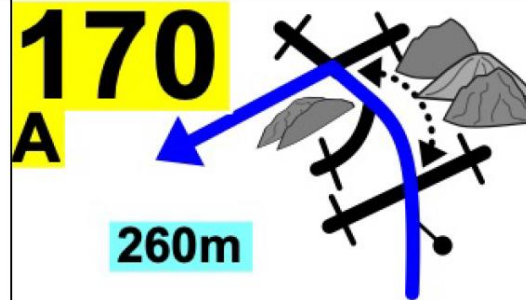
71.03 <hr/> 0.60 (C)	65 A 	(23)
--	---------------------------	-------------



COMPLICATED ROADBOOK NOTES

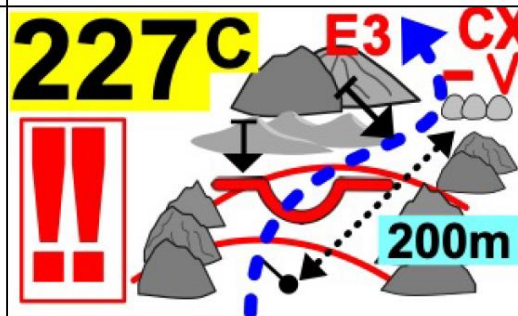
85,29

85.29
0.84



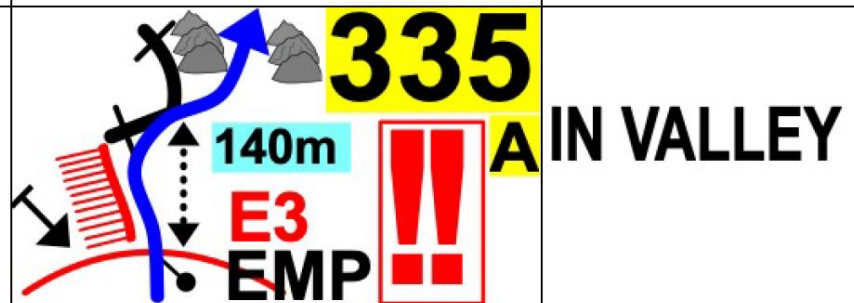
144,51

MODIF
144.51
0.84



309,64

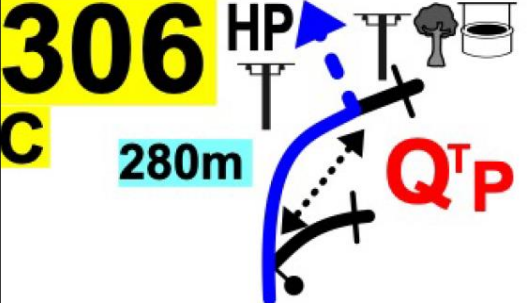
309.64
1.34



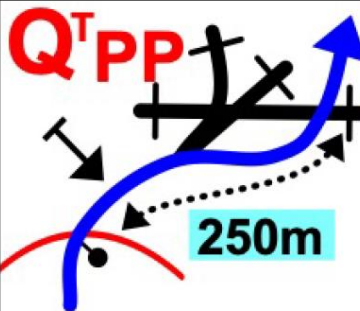


COMPLICATED ROADBOOK NOTES

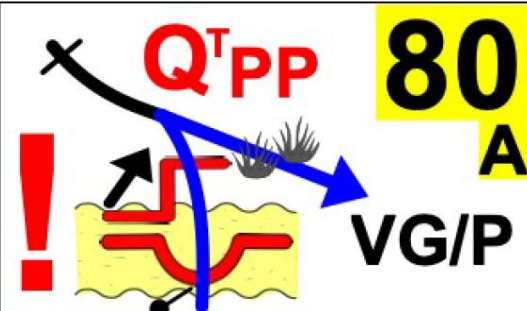
335,92

335.92 0.56	306 HP C 280m 	↗ DNX ET BIG DNX L1 !! ↘
-----------------------	---	-----------------------------------

423,01

423.01 0.72	 300 A	
-----------------------	--	--

477,87

MODIF 477.87 0.64 (M)	 80 A	ET à 400m 95 ^A ET PS EMP (108)
---	--	---

THANK YOU



الاتحاد السعودي للسيارات والدراجات النارية
Saudi Automobile & Motorcycle Federation

